



Your Global Marking Partner since 1940



GENERAL CATALOGUE

Machines and systems
for industrial marking

www.automator.com

WHY CHOOSE AUTOMATOR?



Since its founding in 1940, AUTOMATOR has been focused exclusively on Industrial Marking Products and Solutions making us the largest manufacturer of marking equipment in the world.

No matter how you want to permanently identify your product, AUTOMATOR has a solution that will exceed your expectation making a mark that will enhance your part and limit your liabilities.

Our GLOBAL network of partners (not just distributors!) are available in 102 countries serving 100+ business sectors. No matter where you are in this world, we are there to support you and our marking products, birth to death.

**We are your global
marking partner since
1940!**



Laser



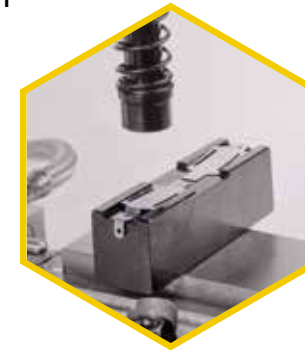
Dot peen



Roll stamping



Impact



Presses



Scribe



Hot foil



Chem-etch

Automator is cetificated CISQ,
the consortium for IT Software Quality



Automator Group believes in rational energy use as input
in the design and development of its marking systems



Automator is certificated ISO 9001 IQ Net since 2003



Automator Group believes that all its machinery must be
designed and produced according to the concept
of "green philosophy"



LASER

nanoVIS^{II}

- aWave™ laser marking products
- Get results comparable to much more expensive units
- A wide variety of materials, such as Plastics, Metals, Anodized, Ceramics and much more
- Easy preliminary diagnosis LED system.

VIS - Power range 10 - 20 - 30 - 40 W

- The most versatile, easy to use and plug-and-play
- In Mark-alone™ mode, no pc is needed
- A COMPLETE SOLUTION IN A SINGLE box, NO SEPARATE CONTROLLER!

greenVIS - Power range 3 - 5 - 10 W

Ask us how to SAVE US\$6300 with the VIS!



LASER



FYBRA™

- In the MarkAlone™ mode, no pc is needed
- Always the right focus with our Automatic FocusFinder™
- Get deeper marking in a variety of environments
- Power range 22 - 33 - 54W



FocusFinder™

Automatically set focal height
between lens and your part

LASER

Make any Automator laser a Class I marking STATION

Automator enclosures are elegant in form and function:

Available for all Automator lasers

- Automated door and electric Z axis
- Large inspection window, large marking area, small footprint
- T-Slot base for easily mounting fixtures

Options: Rotary Axis, Programmable Z Axis and Automatic FocusFinder™

A wide range of loading area sizes



REGINA



loading area
15,7x15,7"



ARENA



loading area
21,6x17,3"



REX II



loading area
39,37x35,43"

LASER



SUPERIOR



loading area
31,5x31,5"



**Laser
Snorkel™**



The smallest portable
laser in the world

...and also customised models!

AC500

New universal and full optional

A 7" touch screen user interface makes the extensive features of the software easy to access. For the first time, marking technology has reached the ultimate in capabilities and intuitive simplicity.

IEC
60950-1

CSA C22.2
60950-1

The AC500 controller can be used with a PC or alone with the special Automator MarkAlone™. Up to 8 programs management.

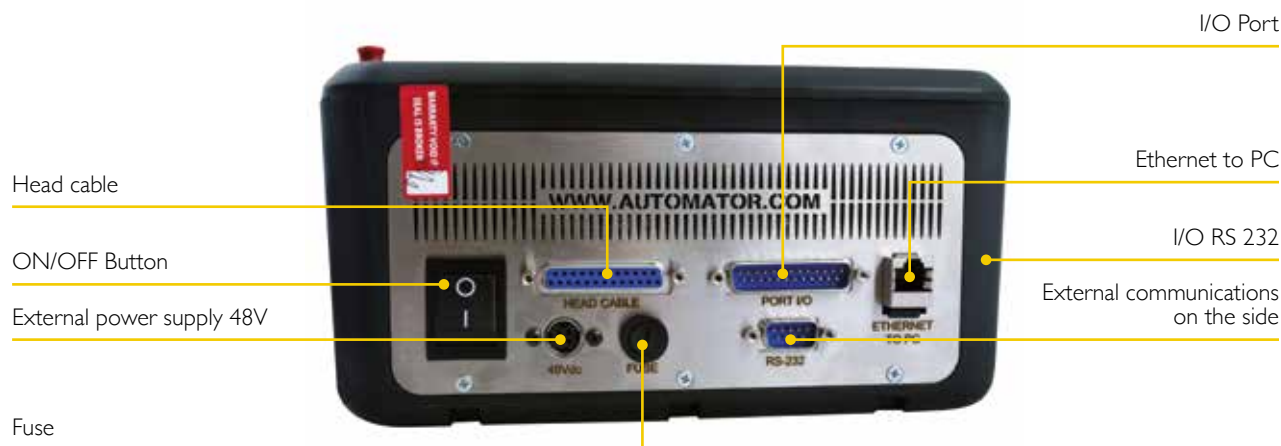


External optional communications



(*) All listed brands are registered and property of their company

For all models





For all models



AC250

Universal and affordable

The AC250 controller can operate as a slave to a local PC or you can download up to eight patterns to the controller's on-board memory and processor to operate without a PC in our proprietary MarkAlone™ method.

IEC
60950-1

CSA C22.2
60950-1



The AC500 controller can be used with a PC or alone with the special Automator MarkAlone™ Up to 8 programs management.

DOT PEEN



Watch video now!



ADP120160
ADP120160DEEP

120 x 160 mm - 4.7 x 6.2 in



ADP5090

50 x 90 mm - 1.9 x 3.5 in



ADP300400



ADP5090P
ADP120160P
ADP300400P

Marking flexibility: logos, drawings, serial numbers, text, arc text, marking preview and much more then that.



DOT PEEN



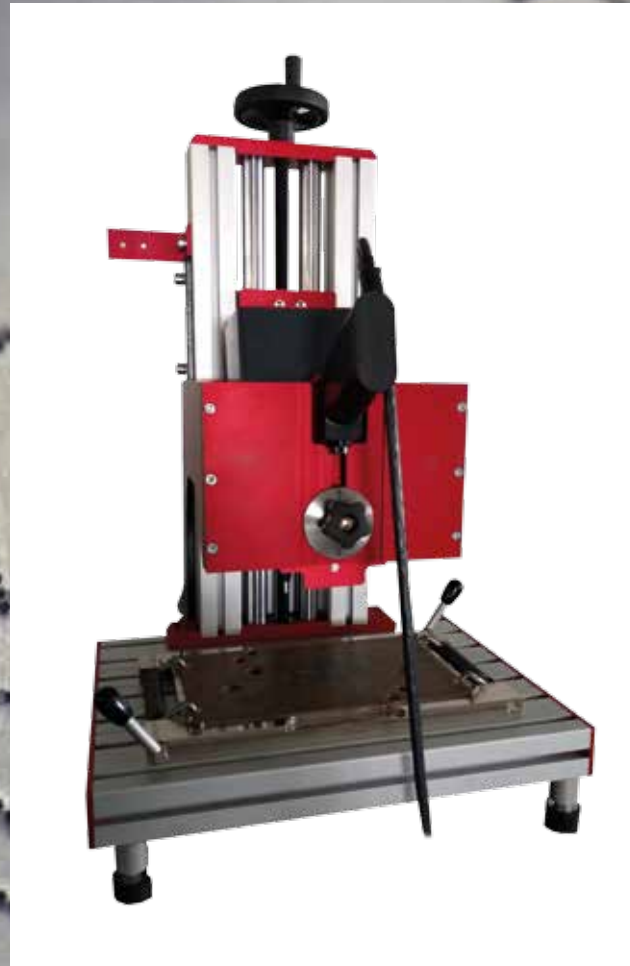
**Portable
ADP25120P**

25 x 120 mm - 1 x 4.7 in



**Portable
ADP2560P**

25 x 60 mm - 1 x 2.3 in



**ADP5090
Toolstand
mode**



ADP300400

ADP Convertible Kit Use Automator dot peen marker easily in both toolstand and portable mode

SCRIBE



Watch video now!



ASM6090

60 x 90 mm - 0.9 x 3.5 in



ASM40150

40 x 150 mm - 1.5 x 5.9 in

New small, compact and silent scribe machine The best balance quality/price!

DOT PEEN Pins



3 - 6 mm dot



12 mm dot



18 mm dot



3 - 6 mm XL dot



4 mm vibro



3 mm vibro



16 mm scribe



3 mm electric



ROLL STAMPING



MB7I UE

Electric unit for integration.



MB4I

A wide choice of models to mark on the circumferences, without crash, logos, signs and numbers.



MB7I E

Manual, electric and electro-pneumatic versions for marking medium diameters up to 110 mm.





MB76 EP 90°

Continuous marking on Hexagonal Bars. A wide choice of models to mark on circumferences with 100 % uptime, ease of use for marking logos or numbers



MB7I CE



MB76 EP

ROLL STAMPING

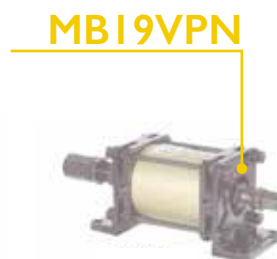
Marking diameters up to 600 mm.
Models available in electric and
electric-pneumatic versions.

...the best solution for round!

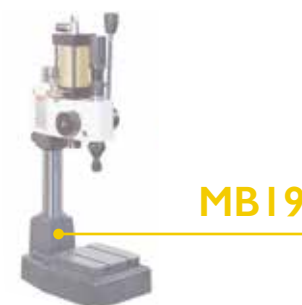
IMPACT



Pneumatic impact units with power up to 7500 Kg, ideal for integration.



Pneumatic impact bench marking machines, with power up to 7500 Kg.



Manual impact marking bench machines, with power up to 6500 Kg.





PRESSES



MB32S



MB20S



MB15S

Manual



MB19P



MB21P



MB35P



MB125P

Pneumatic

Manual and pneumatic presses for pressing, rivetting, bending or stacking.

Easy marking in ONE MOTION !

ACCESSORIES



MB5

Numbering head
for manual applications.



MBI4

Special
dies and logos.



PC

Typeholders with 1, 2, 3 lines
for Automator types.
Manual and automatic
numbering heads in different
heights wheels number.



High quality steel types,
in different heights,
available as single units
or in boxes.



TRACEABILITY

MARK,
READ,
TRACK.



QR code



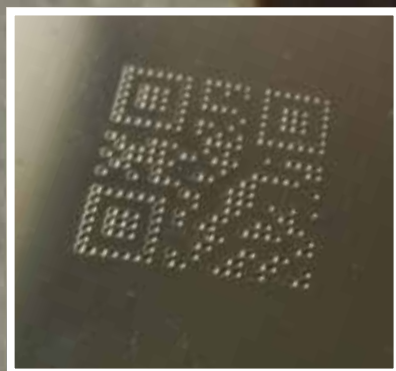
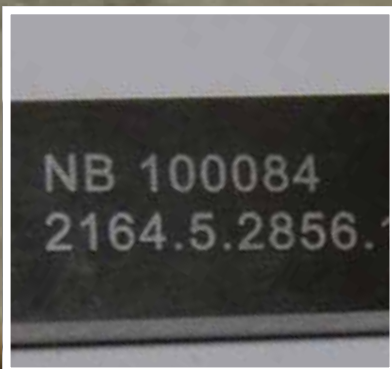
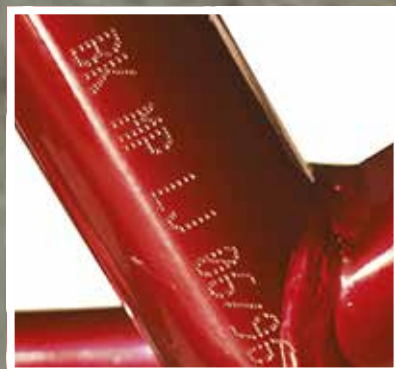
Data matrix



Barcode



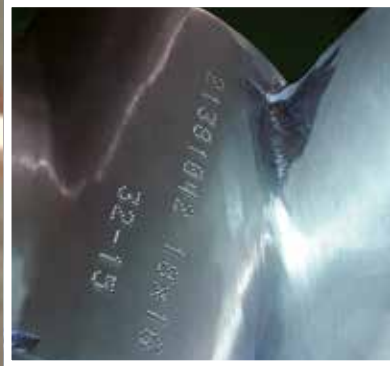
www.automator.com

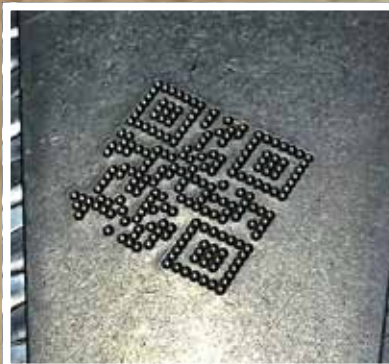
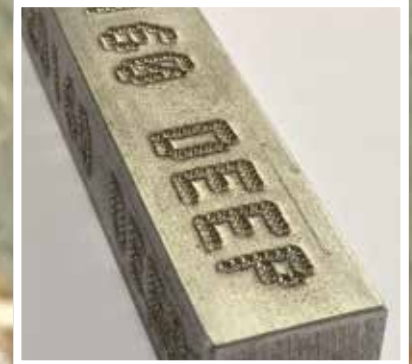






www.automator.com





THE BIGGEST MARKING **FAMILY** IN THE WORLD.



AUTOMATOR INTERNATIONAL SRL: via Meucci 8, 20094 Corsico (MI) Italy Tel: + 39 02.48601445 – info@automator.com

www.automator.com

